

Canadian platform to increase
usage of real-world evidence



The CAPTURE Project:

Supporting Implementation and Dissemination in Chronic Disease Prevention Programming

Marla Steinberg, PhD, Director of Evaluation
The CAPTURE Project
Simon Fraser University
Burnaby, British Columbia

Funded by:



{ Outline

- Exploring the challenges in implementation and dissemination of community-based chronic disease prevention programs
- Developing a solution: The CAPTURE Project
- What can the science of implementation and dissemination offer to support the development, implementation and dissemination of CAPTURE

{ Challenges in Implementation and Dissemination

- Finding interventions
 - There are few sources for finding out about interventions
 - CDC Community Guide
 - RTIPS
 - Canadian Best Practices Portal
 - Academic Journals
 - Organization websites



Canadian platform to increase
usage of real-world evidence





Finding relevant information for adaptation or implementation

- Existing sources focus on efficacy
- Don't provide information on other information needed for implementation decision-making
- No sources for tacit knowledge on how to implement interventions



Unmet Evidence Needs: Peel Public Health

Type of Evidence	Very important (% of respondents)	Easily accessible (% of respondents)
Quantitative evaluation results <i>(e.g. measures of program or policy effectiveness)</i>	79%	21%
Intervention details <i>(e.g. costs, activity descriptions, lessons learned)</i>	77%	20%
Academic literature <i>(e.g. peer-reviewed publications such as systematic reviews, journal articles, best practice guidelines)</i>	76%	64%
Expert advice <i>(e.g. experienced colleagues, researchers)</i>	71%	46%
Qualitative evaluation findings <i>(e.g. descriptive stories of the impact of a practice or policy)</i>	68%	19%
Surveillance data	65%	28%

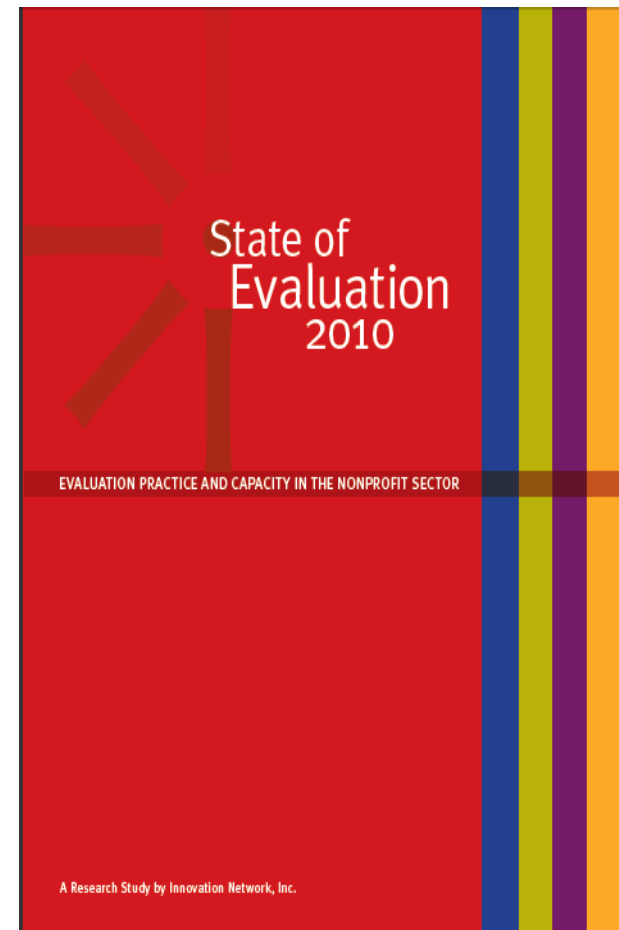
{ Unanswered Questions

- Does the intervention work for this population?
- Will people be willing or want to take up the service offered?
- Is it feasible to implement given our level of resources?
- How does it work?
- Will it do more good than harm?
- Are users, providers, and other stakeholders satisfied with this service?
- Is it cost-effective?

{ Evaluations Challenges

- Less than one-quarter of the organizations devote the recommended amount of 5% of their budget to evaluation
- Limited staff time, limited staff experience, and insufficient financial resources are barriers across the sector

Innovation Network, 2010:
Findings from national sample of
public charities (n= 1,072)



Canadian platform to increase
usage of real-world evidence





Evaluation is the **second lowest organizational priority**—
only more important than research. (n = 753)



{ Evaluation Challenges: CAPTURE Consultations

Close to 500 community-based health promotion practitioners and managers:

- It is difficult to find good quality data collection tools for tracking program outcomes
- It is difficult for practitioners to do data analysis
- Program managers and policy-makers want to be able to compare outcomes across program types
- It is expensive and time consuming to set up evaluation systems
- There is no place to disseminate completed evaluations so the results can be used by others



Canadian platform to increase
usage of real-world evidence

} **CAPTURE**

CAPTURE

Simply put, we make evaluation easy.

Revolutionizing how chronic disease prevention practitioners and program managers learn from what they do. Get started now!

Sign up for a **free** account

Already have an account? Sign in here:

[Français](#)

Username or e-mail

Password

Sign in

[Forgot your password?](#)

The screenshot displays the CAPTURE dashboard with the following sections:

- Dashboard:** Includes navigation tabs for Dashboard, My Interventions, My Network, and My Bookmarks, along with a search bar and a 'Go' button.
- Your latest activity:** A list of recent actions under the heading 'Action Schools! BC'.

Activity	Who/date
Re-Evaluation body meeting	Posted by Edith W Today
Schedule a meeting with David Couck	Assigned to you by Queen C Yesterday
Logic model proposal.docx	Uploaded by Carm M 2 days ago
- New messages (1):** A list of messages.

Message	From/date
The name is CAPTURE!	Posted by CAPTURE! Today
- My interventions (2):** A list of interventions with a 'View all interventions' link.
- My upcoming To-do items (2):** A list of tasks.

Task	Start date	End date	Created by
Schedule a meeting with David Couck	Oct 13, 2010	—	vincet
Review a new logic model	Aug 3, 2010	Oct 19, 2010	vincet
Schedule a meeting with David Couck	Oct 14, 2010	March 11, 2011	vincet
Review a new logic model	—	—	vincet
Healthy Eating in Young Adults	Oct 5, 2010	Oct 22, 2010	vincet



Share your work

Share the successes and



Connect with others

Connect and collaborate with



Search for resources

Search for interventions, tools

PLATFORM FEATURES

Spring 2011 Release:

SHARE YOUR WORK

Post summaries of your interventions, upload evaluation reports and intervention material, and share your real-life learnings.



CONNECT WITH OTHERS

Search for practitioners and organizations that share your interests in primary prevention.



FIND RESOURCES

Search the database for information and links to chronic disease prevention programs and policies.



Summer 2011 Release:

PLAN YOUR EVALUATION

Develop a logic model and select evaluation questions, indicators, and data collection tools for process and outcome evaluations.



MANAGE YOUR DATA

Collect and manage your data. View the results of individual programs or aggregate result across sites, programs, or initiatives.



GENERATE REPORTS

Produce evaluation reports using customizable report templates.



CAPTURE

[Overview](#)[Describe intervention](#)[Plan evaluation](#)[Gather data](#)[Population](#)[Setting](#)[Purpose and Activities](#)[Evidence Base](#)[Resources](#)[Learning](#)[Admin](#)

Understanding the population of interest and the context of the intervention will help others assess whether or not the intervention could be adopted or adapted.

Select the main descriptors of your population of interest. Choose terms that would best facilitate a search of your intervention.

▶ **Individual Characteristics**

▶ **Social and Cultural Contexts**

▶ **Employment and Education Status**

▶ **Physical and Mental Health Conditions**

▶ **Attributes of Physical and Built Environments**

Search

Look for in

Your search for keyword(s) "obesity" returned 5 result(s).

Intervention

Displaying results 1 to 1 of 1

Building Trust to Address Obesity  [Bookmark this](#)

This initiative is a series of meetings with participants from academic, NGOs, government and the private sector to discuss how to build trust for cross sector partnerships that address the epidemic of obesity

Created on Mar. 10, 2011

Narrow down results

Result type

[Intervention \(1\)](#)

[Person \(0\)](#)

[Evaluation Tool \(0\)](#)

[External Resources \(4\)](#)


Search

Look for in

External Resources

Displaying results 1 to 4 of 4

Utilizing the Church and Church Members for Conducting Weight Loss Programs

 [Bookmark this](#)

URL: <http://rtips.cancer.gov/rtips/programDetails.do?programId=273970>

Fighting Fat, Fighting Fit [Bookmark this](#)

URL: http://cbpp-pcpe.phac-aspc.gc.ca/intervention_pdf/en/207.pdf

GEMS - Girls Health Enrichment Multi-Site Studies [Bookmark this](#)

URL: <http://cbpp-pcpe.phac-aspc.gc.ca/intervention/193/view-eng.html>

Active Programme Promoting Lifestyle Education in School (APPLES) [Bookmark this](#)

Other results

Result type

[Intervention \(1\)](#)

[Person \(0\)](#)

[Evaluation Tool \(0\)](#)

Search

Look for

in

Evaluation Tools

Displaying results 1 to 4 of 4

7-Day Physical Activity Diary [Bookmark this](#)

Version: Version I , Year: 2003 , Author: Corinna Koebnick, Jutta Möseneder, Ulrike Trippo, Karen Wagner, Hans-Joachim F. Zunft (German Instit

International Physical Activity Questionnaire (IPAQ) - Long Form [Bookmark this](#)

Year: 2002 , Author: IPAQ core group

New Zealand Physical Activity Questionnaire (NZPAQ) - Short Form [Bookmark this](#)

Version: Version 1 , Year: 2004 , Author: Physical Activity Joint Monitoring Group (comprised of the Ministry of Health, SPARC, and Statistics

Other results

Result type

[Intervention \(0\)](#)

[Person \(0\)](#)

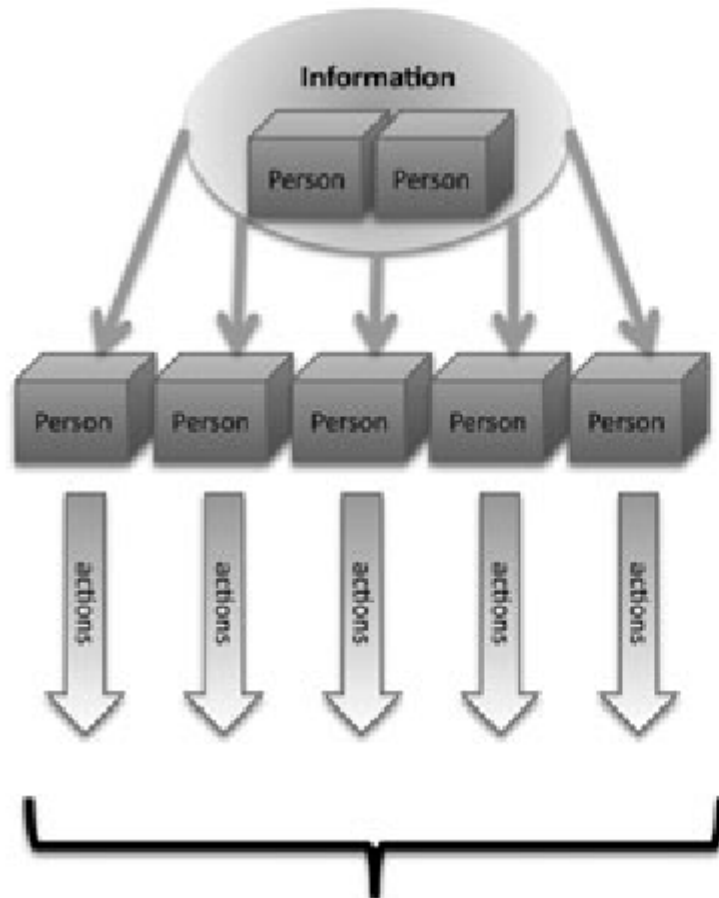
[External Resources \(26\)](#)

{ If we build it, they will not come!

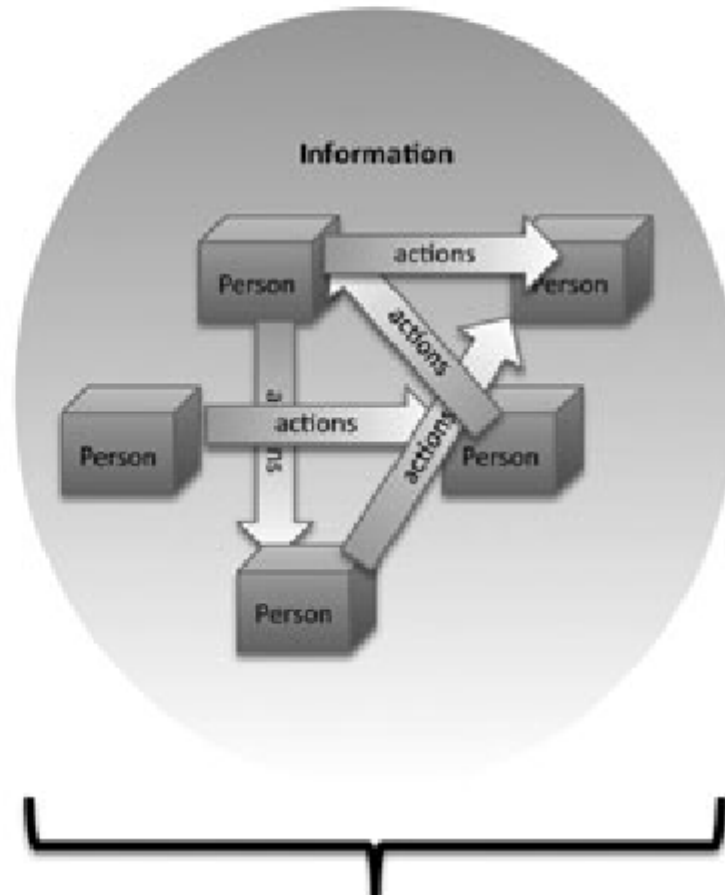
- What can the science of implementation and dissemination offer CAPTURE for its implementation and dissemination journey?

Diffusion is Complex

Individual (clinical) KTE models



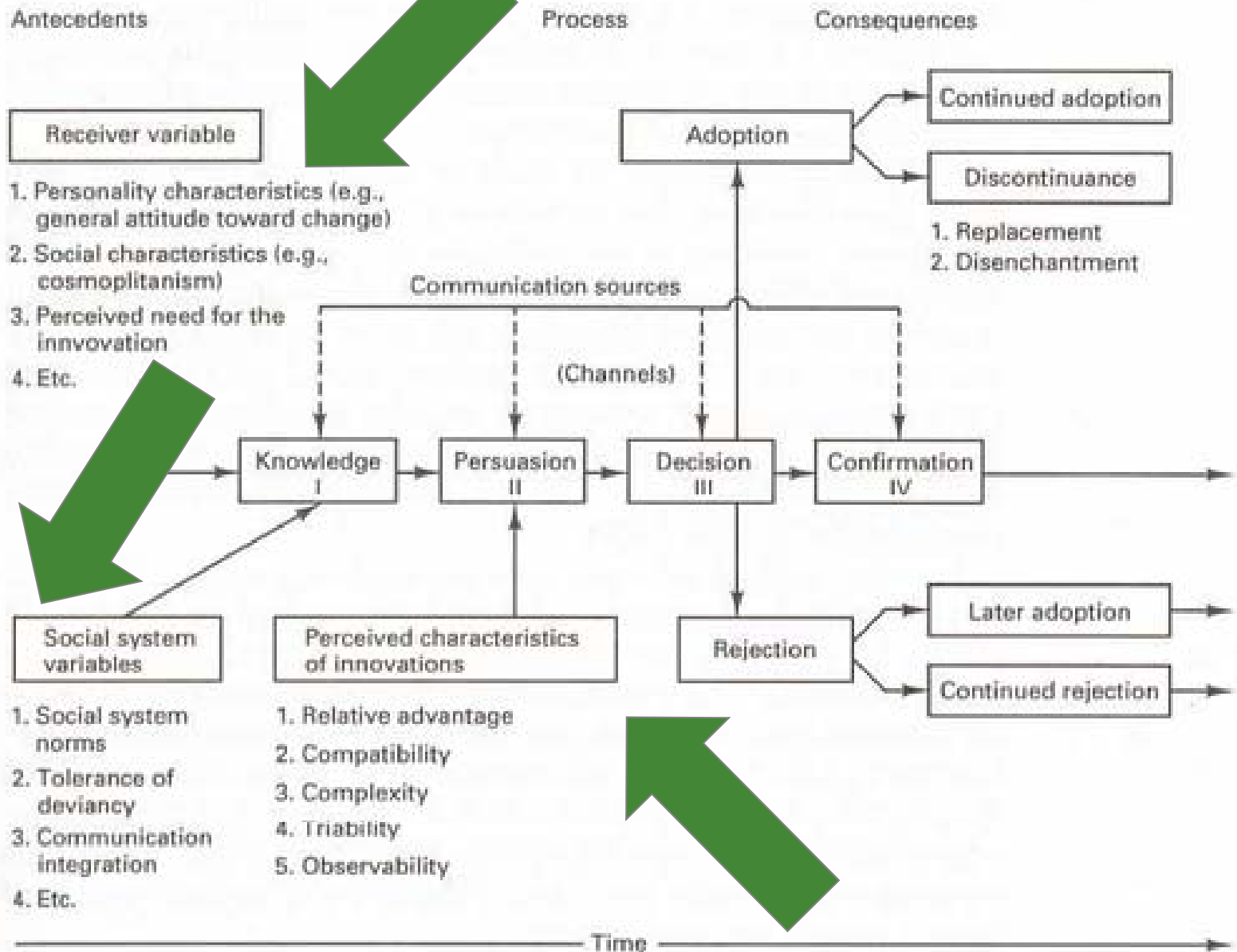
Collective (policy and organizational) KTE models



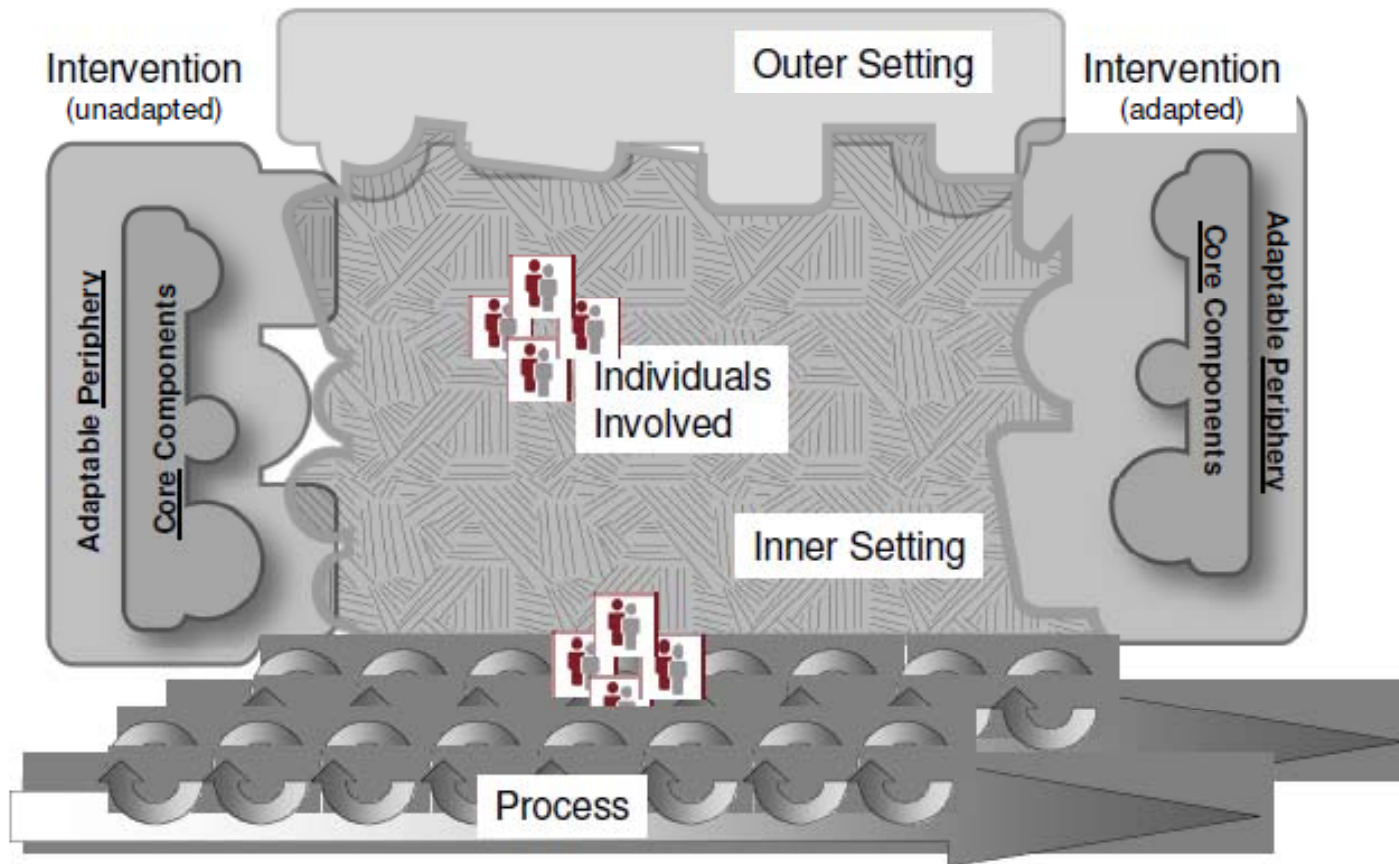
Contandriopoulos, D., Lemire, M, Denis, J. & Tremblay, E. (2010). Knowledge exchange processes in organizations and policy arenas: A narrative systematic review of the literature. *The Milbank Quarterly*, 88(4), 444-483, p. 458



Roger's Diffusion of Innovation



Consolidated Framework for Advancing Implementation



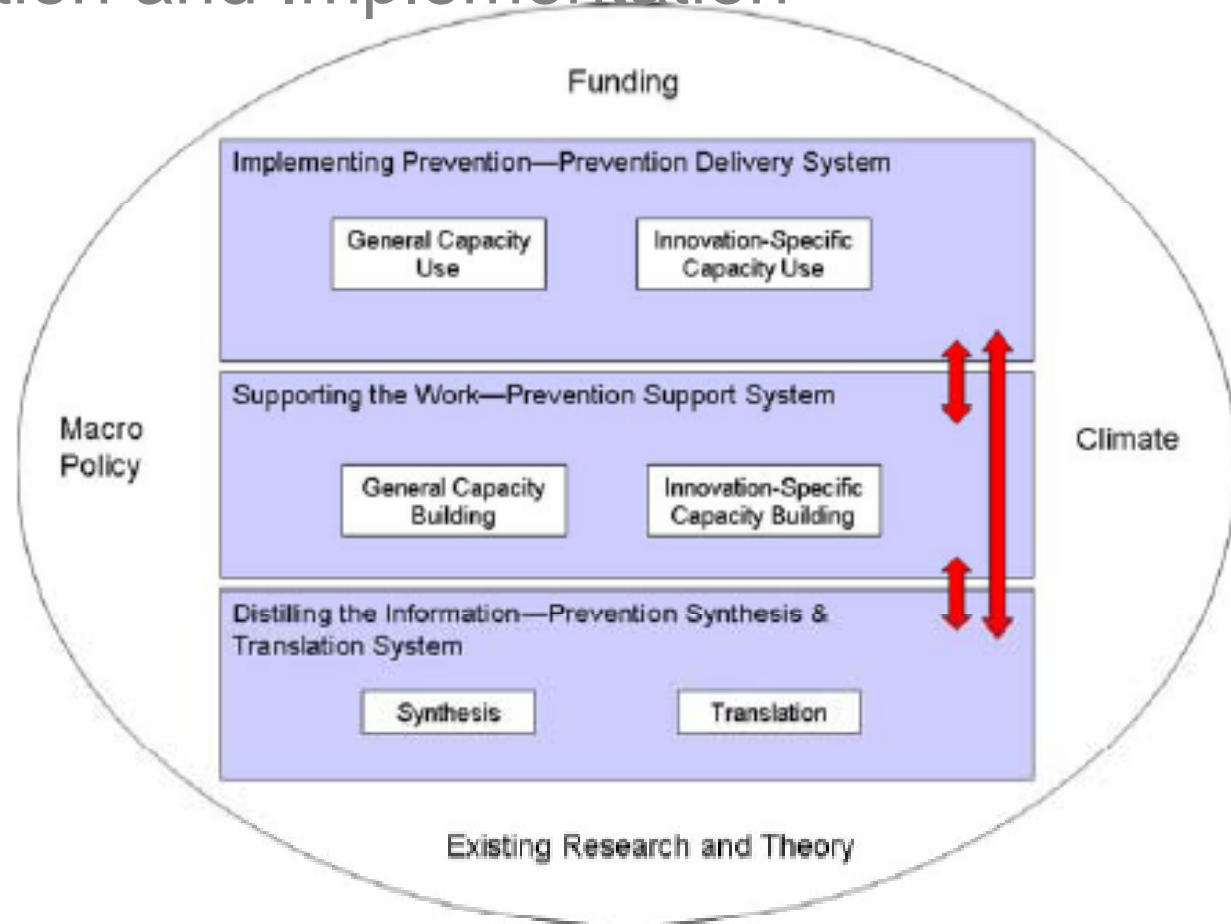
Damschroder, L.J., Aron, D.S., Keith, R.E., Kirsh, S.R., Alexander, J.A., & Lowery, J.D. (2009). Fostering implementation of health services research findings into practice: a consolidated framework for advancing implementation Science. **Implementation Science**, 4:50.

Canadian platform to increase
usage of real-world evidence



Interactive Systems Framework for Dissemination and Implementation

Fig. 2 The interactive systems framework for dissemination and implementation



Wandersman, A., Duffy, J., Flaspohler, P. et al. (2008). Bridging the Gap Between Prevention Research and Practice: The Interactive Systems Framework for Dissemination and Implementation. *Am J Community Psychol* (2008) 41:171–181.

Canadian platform to increase
usage of real-world evidence



{ Our Implementation and Dissemination Challenges

- External factors:
 - Time limited funding (3 years!)
 - We need to prove our worth quickly
- Organizational factors:
 - Complexity of organizational decision-making
 - Some organizations need to take a test drive
- Individual factors:
 - Fear of sharing
 - Evaluation anxiety
 - Valuing and finding the time to share and reflect

{ Our Approach

- Client-based development:
 - Finding clients with real evaluation needs we can meet through developing the platform
 - CLASP – evaluation framework and tools for collaborative action on chronic disease prevention
 - Coalitions Linking Action and Science for Prevention



COALITIONS LINKING ACTION
& SCIENCE FOR PREVENTION

- British Columbia Early Childhood Funders Common Evaluation Framework

Canadian platform to increase
usage of real-world evidence



TRAILBLAZERS AND TREND SETTERS WANTED

If you deliver or fund primary prevention programs for chronic disease, make sure to stop by the CAPTURE Project table in the exhibitors' area.

Get a sneak peek at this brand new web-based platform for evaluating, informing and sharing primary prevention programs for chronic disease – and discover how you can be part of the movement to harness real-world evidence for better interventions.

www.thecaptureproject.ca



Canadian platform to increase usage of real-world evidence

Plateforme canadienne pour accroître l'usage de données probantes du monde réel



Creating a Culture of Evaluation...

Eureka! An evaluation culture has finally been grown in the lab!

Now if only we could figure out how to grow it in the real world.

Hey look, these guys are forming a subcommittee! Wait, nope, they're disputing the results.



Rebecca Andrews
© 2007 Fieldstone Alliance

CAPTURE

{ Contact Us

www.thecaptureproject.ca

- To share interventions and meet your dissemination needs
- To test drive and provide feedback
- Help us build the platform

marla.steinberg@thecaptureproject.ca

Canadian platform to increase
usage of real-world evidence

